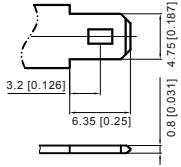


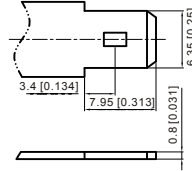
Unit:mm[inch]

■ T1 Terminal



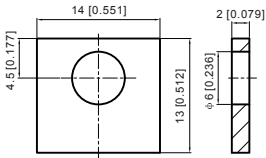
FASTON TYPE
(Copper) quick
disconnect tabs;
silver coating for
better conductivity

■ T2 Terminal



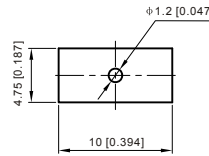
FASTON TYPE
(Copper) quick
disconnect tabs;
silver coating for
better conductivity

■ T3 Terminal



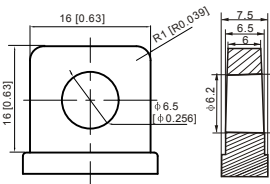
Brass Coated With
Tin Torque: 3.9 ~ 5.4
N*m

■ T4 Terminal



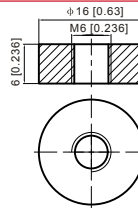
Brass Coated
With Tin

■ T5 Terminal



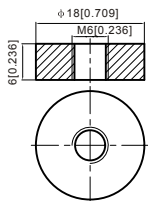
Brass Coated With
Tin Torque: 3.9 ~ 5.4
N*m

■ T6 Terminal



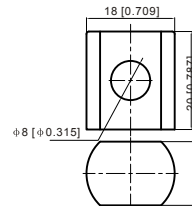
Brass Coated With
Tin Torque: 3.9 ~ 5.4
N*m

■ T7 Terminal



Brass Coated With
Tin Torque: 3.9 ~ 5.4
N*m

■ T9 Terminal



Lead Torque:
11 ~ 14.7 N*m

VALVE REGULATED LEAD-ACID BATTERY, RECHARGABLE



