

# CDC 200-6

6V 200AH

Deep Cycle



## CDC200-6



## Physical Specification

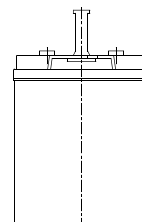
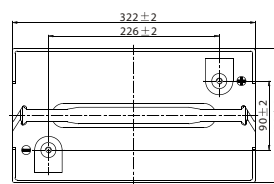
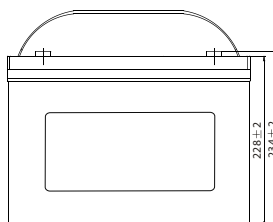
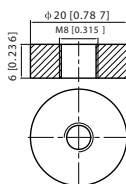
Part Number:	<b>CDC200-6</b>
Length:	<b>306 ± 3 mm (12.05 inches)</b>
Width:	<b>168 ± 2 mm (6.61 inches)</b>
Container Height:	<b>222 ± 3 mm (8.74 inches)</b>
Total Height (with terminal):	<b>228 ± 3 mm (8.98 inches)</b>
Approx Weight:	<b>Approx 28.0 kg (61.73 lb)</b>

## Specifications

	Nominal Voltage	6V	
	Nominal Capacity (20HR)	200AH	
Terminal Type	Standard Terminal	T8	
	Optional Terminal	-	
Container Material	Standard Option	ABS	
	Flame Retardant Option (FR)	ABS (UL94:VO)	
Rated Capacity	208.0 AH/10.4A	(20hr, 1.80V/cell, 25°C / 77°F)	
	200.0 AH/20.0A	(10hr, 1.80V/cell, 25°C / 77°F)	
	172.0 AH/34.4A	(5hr, 1.75V/cell, 25°C / 77°F)	
	156.0 AH/52.0A	(3hr, 1.75V/cell, 25°C / 77°F)	
	122.0 AH/122.0A	(1hr, 1.60V/cell, 25°C / 77°F)	
Max Discharge Current	2000A (5s)		
Internal Resistance	Approx 1.4mΩ		
Discharge Characteristics	Operating Temp. Range	Discharge: -15 ~ 50°C (5 ~ 122°F)	
		Charge: 0 ~ 40°C (5 ~ 104°F)	
		Storage: -15 ~ 40°C (5 ~ 104°F)	
	Nominal Operating Temp. Range	25 ± 3°C (77 ± 5°F)	
	Cycle Use	Initial Charging Current less than 60.0A. Voltage 7.2V ~ 7.5V at 25°C (77°F) Temp. Coefficient -15mV/°C	
	Standby Use	No limit on Initial Charging Current Voltage 6.75V ~ 6.9V at 25°C (77°F) Temp. Coefficient -10mV/°C	
Capacity affected by Temperature	40°C (104°F)	103%	
	25°C (77°F)	100%	
	0°C (32°F)	86%	
Design Floating Life at 20°C	12 Years		
Self Discharge	Canbat batteries may be stored for up to 6 months at 25°C (77°F) and then a refresh charge is required. For higher temperatures the time interval will be shorter.		

## Dimensions

### T8 Terminal



ALL DATA IS SUBJECT TO CHANGE WITHOUT NOTICE

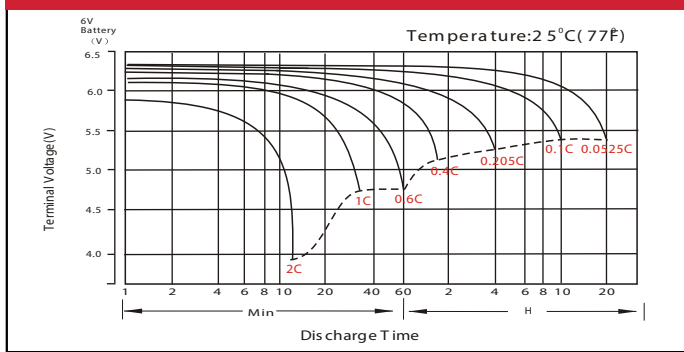
## Constant Current Discharge (Amperes) at 25 °C (77°F)

F.V/Time	5min	10min	15min	20min	30min	45min	1h	2h	3h	4h	5h	6h	8h	10h	20h
1.85V/cell	68.6	52.6	43.6	37.7	29.2	21.5	18.1	10.7	8.38	6.81	5.55	4.82	3.89	3.25	1.78
1.80V/cell	92.0	67.3	52.7	44.6	34.4	25.0	20.3	11.7	9.01	7.27	5.96	5.17	4.12	3.35	1.80
1.75V/cell	103.8	73.9	57.6	47.9	35.7	25.9	21.2	12.1	9.18	7.43	6.12	5.31	4.19	3.44	1.82
1.70V/cell	114.3	80.6	61.4	50.4	37.2	27.0	21.9	12.4	9.44	7.63	6.27	5.42	4.25	3.51	1.85
1.65V/cell	126.0	86.9	65.3	53.5	39.2	27.6	22.4	12.6	9.84	7.89	6.45	5.54	4.32	3.58	1.88
1.60V/cell	139.0	94.4	69.9	57.0	41.4	28.8	22.6	13.1	10.1	8.14	6.66	5.66	4.36	3.62	1.89

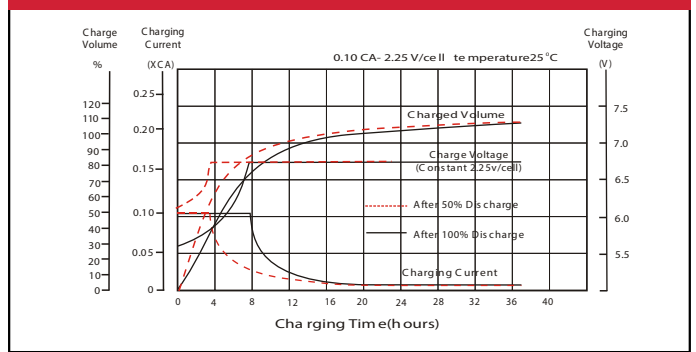
## Constant Power Discharge (Watts) at 25 °C (77°F)

F.V/Time	5min	10min	15min	20min	30min	45min	1h	2h	3h	4h	5h	6h	8h	10h	20h
1.85V/cell	125.3	97.2	81.4	71.1	55.6	41.3	34.9	20.8	16.3	13.3	10.9	9.48	7.67	6.43	3.53
1.80V/cell	166.5	122.8	97.0	82.8	64.6	47.6	38.9	22.5	17.5	14.1	11.6	10.12	8.12	6.62	3.56
1.75V/cell	183.7	132.8	104.6	88.2	66.5	49.0	40.5	23.3	17.7	14.4	11.9	10.37	8.24	6.78	3.59
1.70V/cell	196.7	141.4	110.2	92.0	68.8	50.7	41.7	23.8	18.2	14.8	12.2	10.57	8.34	6.92	3.65
1.65V/cell	213.8	151.2	116.2	97.0	72.0	51.5	42.3	24.0	18.9	15.2	12.5	10.76	8.45	7.05	3.70
1.60V/cell	230.4	160.4	122.3	102.2	75.5	53.4	42.5	24.9	19.4	15.6	12.8	10.96	8.52	7.11	3.71

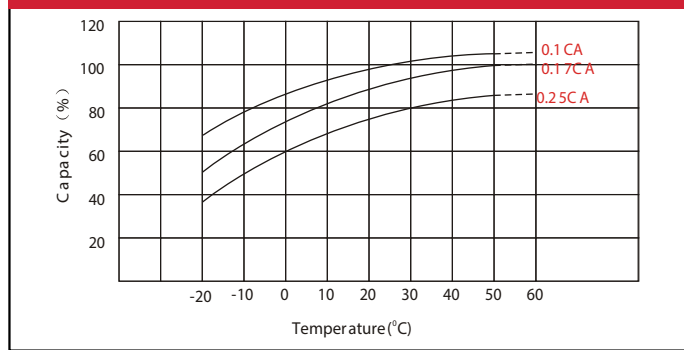
### Discharge Characteristics



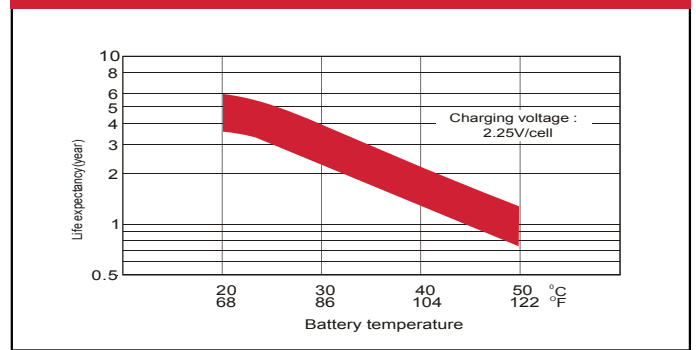
### Float Charging Characteristics



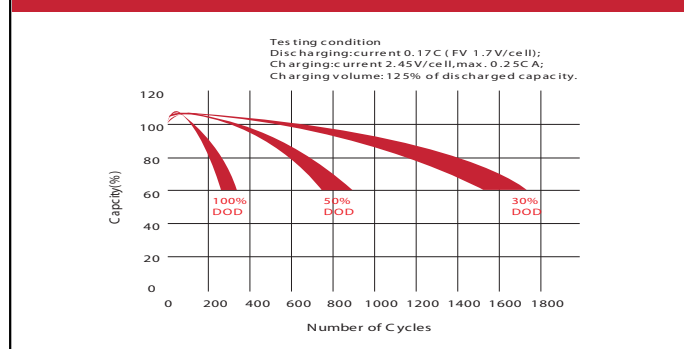
### Temperature Effects in Relation to Battery Capacity



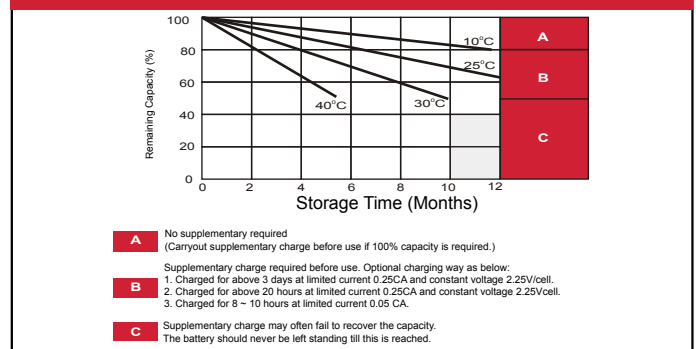
### Effect of Temperature on Long Term Float Life



### Effect of Temperature on Long Term Float Life



### Self Discharge Characteristics



ALL DATA IS SUBJECT TO CHANGE WITHOUT NOTICE