



**CBL 150-2**

Awaiting Image

**Physical Specification**

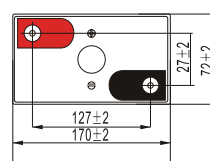
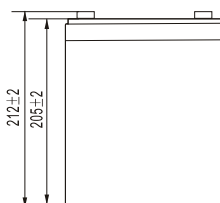
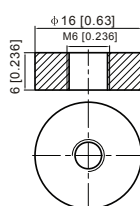
Part Number:	<b>CBL150-2</b>
Length:	<b>170 ± 2 mm (6.69 inches)</b>
Width:	<b>98 ± 2 mm (3.86 inches)</b>
Container Height:	<b>205 ± 2 mm (8.07 inches)</b>
Total Height (with terminal):	<b>212 ± 2 mm (8.35 inches)</b>
Approx Weight:	<b>Approx 8.5 kg (18.74 lbs)</b>

**Specifications**

	Normal Voltage	2V
	Normal Capacity (20HR)	150AH
<b>Terminal Type</b>	Standard Terminal	T7
	Optional Terminal	-
<b>Container Material</b>	Standard Option	ABS
	Flame Retardant Option (FR)	UL94:VO
<b>Rated Capacity</b>	157.5 AH/7.88A	(20hr, 1.80V/cell, 25°C / 77°F)
	150.0 AH/15.0A	(10hr, 1.80V/cell, 25°C / 77°F)
	128.5 AH/25.7A	(5hr, 1.75V/cell, 25°C / 77°F)
	117.6 AH/39.2A	(3hr, 1.75V/cell, 25°C / 77°F)
	90.0 AH/90.0A	(1hr, 1.60V/cell, 25°C / 77°F)
<b>Max Discharge Current</b>	1200A (5s)	
<b>Internal Resistance</b>	Approx 1.1mΩ	
<b>Discharge Characteristics</b>	Operating Temp. Range	Discharge: -15 ~ 50°C (5 ~ 122°F)
		Charge: 0 ~ 40°C (5 ~ 104°F)
		Storage: -15 ~ 40°C (5 ~ 104°F)
	Nominal Operating Temp. Range	25 ± 3°C (77 ± 5°F)
	Cycle Use	Initial Charging Current less than 45.0A. Voltage 2.4V ~ 2.5V at 25°C (77°F) Temp. Coefficient -5mV/°C
	Standby Use	No limit on Initial Charging Current Voltage 2.25V ~ 2.3V at 25°C (77°F) Temp. Coefficient -3mV/°C
	Capacity affected by Temperature	40°C (104°F) 103% 25°C (77°F) 100% 0°C (32°F) 86%
<b>Design Floating Life at 20°C</b>	10 Years	
<b>Self Discharge</b>	Canbat batteries may be stored for up to 6 months at 25°C(77°F) and then a refresh charge is required. For higher temperatures the time interval will be shorter.	

**Dimensions**

**T7 Terminal**



ALL DATA IS SUBJECT TO CHANGE WITHOUT NOTICE

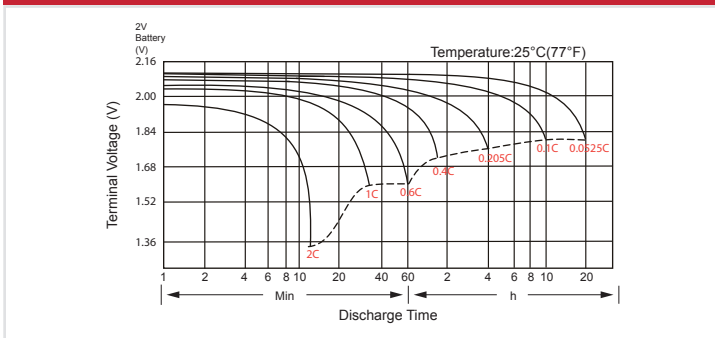
### Constant Current Discharge (Amperes) at 25°C (77°F)

F.V/Time	5 min	10 min	15 min	20 min	30 min	45 min	1h	2h	3h	4h	5h	6h	8h	10h	20h
1.85V/cell	175.0	154.2	135.5	120.0	100.3	81.4	66.5	44.6	34.1	27.5	23.5	20.7	16.8	14.3	7.60
1.80V/cell	213.0	180.4	154.5	134.5	110.2	87.6	70.8	46.9	36.9	28.4	24.5	21.6	17.6	15.0	7.88
1.75V/cell	249.0	206.8	174.7	149.0	119.9	94.8	76.2	49.7	37.5	30.0	25.7	22.6	18.0	15.3	7.98
1.70V/cell	284.9	233.7	193.1	163.9	130.2	101.3	80.7	52.5	39.2	31.2	26.7	23.4	18.6	15.7	8.15
1.65V/cell	305.9	249.9	205.5	173.2	136.5	105.3	83.8	54.2	40.4	32.1	27.4	23.8	18.9	15.9	8.28
1.60V/cell	354.7	283.0	231.0	193.1	149.3	113.9	90.0	56.9	42.1	33.5	28.7	24.9	19.7	16.4	8.54

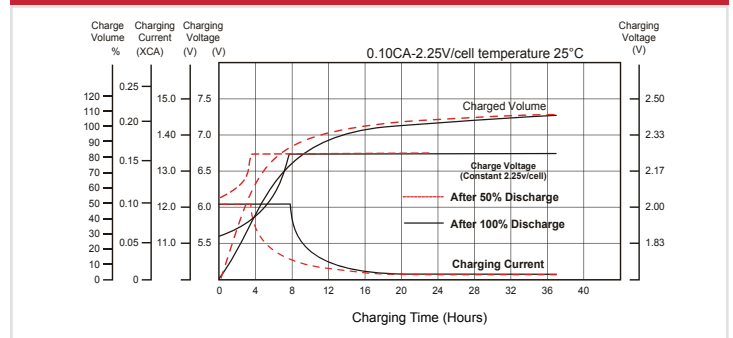
### Constant Power Discharge (Watts) at 25°C (77°F)

F.V/Time	5 min	10 min	15 min	20 min	30 min	45 min	1h	2h	3h	4h	5h	6h	8h	10h	20h
1.85V/cell	321.7	286.4	254.3	227.4	192.1	157.4	128.9	87.0	66.7	53.9	46.3	40.9	33.3	28.5	15.1
1.80V/cell	387.4	331.2	285.9	251.1	207.9	167.9	136.6	90.9	71.9	55.5	48.0	42.4	34.8	29.8	15.7
1.75V/cell	443.2	373.5	319.5	275.6	224.3	180.0	146.3	96.1	72.8	58.4	50.1	44.3	35.6	30.3	15.8
1.70V/cell	493.2	412.7	348.2	300.9	242.4	191.6	154.4	101.2	75.8	60.7	52.1	45.8	36.7	31.1	16.2
1.65V/cell	522.1	437.2	367.7	315.6	251.9	197.4	159.3	103.9	77.9	62.3	53.3	46.5	37.3	31.5	16.4
1.60V/cell	591.6	483.9	406.5	348.1	273.6	212.4	170.1	108.6	80.8	64.7	55.6	48.4	38.6	32.5	16.9

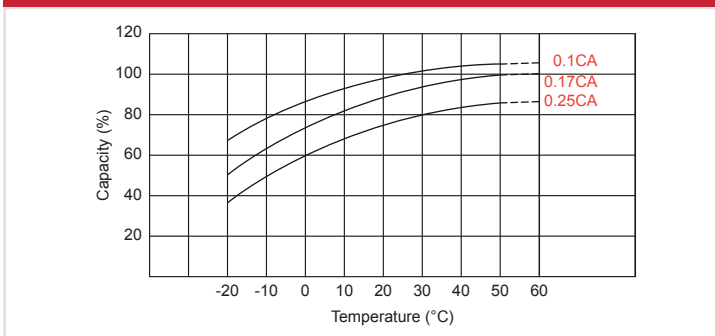
### Discharge Characteristics



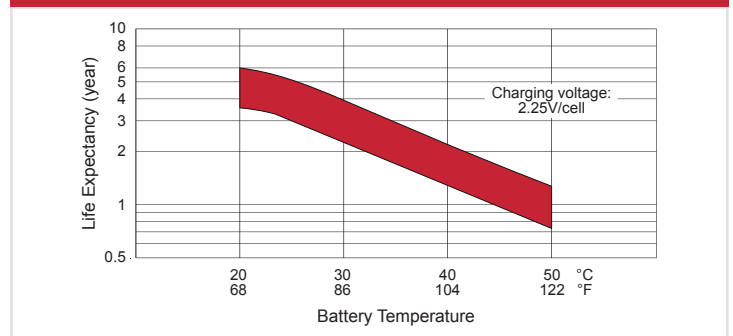
### Float Charging Characteristics



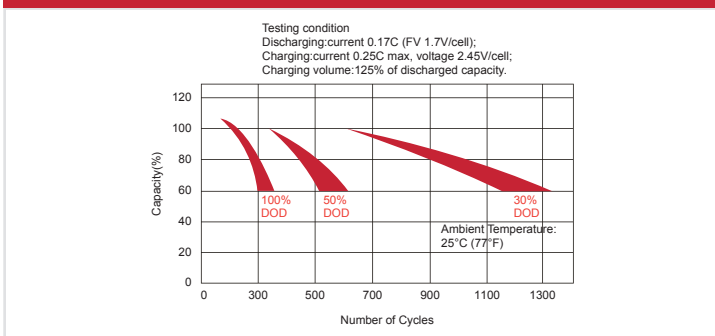
### Temperature Effects in Relation to Battery Capacity



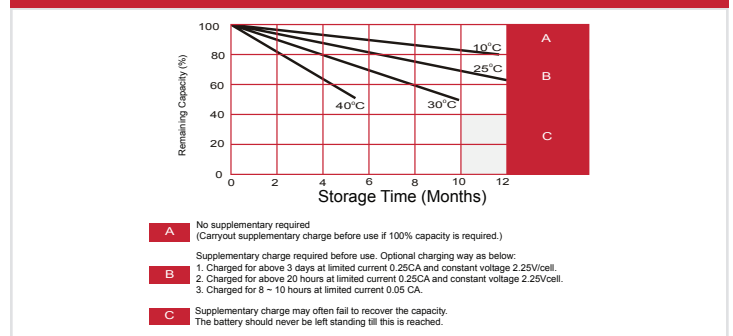
### Effect of Temperature on Long Term Float Life



### Cycle Life in Relation to Depth of Discharge



### Self Discharge Characteristics



ALL DATA IS SUBJECT TO CHANGE WITHOUT NOTICE